

Noise reduction through integrated pilot valve silencer

High flow performance

Simplified soft seal system, incorporating HERION's unique T-Seal

Low maintenance and easy to service

Manual override standard on most models

Quick change of solenoids

Compact construction

Many configurations - air return, spring return or double solenoids



### Technical data

#### Port Sizes

1/8", 1/4", 3/8" and 1/2" NPT

#### Fluid

Filtered air, lubricated or non-lubricated

#### Fluid Temperature

15° to 140°F

#### Ambient Temperature

15° to 140°F

#### Materials

Housing  
Clear anodized aluminum  
Seals: BUNA N

#### Options

Manifold mounting  
External pilot adapter  
Hazardous duty ("explosion-proof") solenoids with UL, CSA, CENELEC and other international listings  
"G" Thread ports available (ISO 228/1)

Polyurethane seals  
Different pilot valve / solenoid operators available for low power, intrinsically safe, etc.  
Variety of manual overrides: detent, non-detent, brass push button

Description	Port size	Nom. size (NPT)	Cv factor (mm)	Operating pressure (psi)	Dim. dwg.	Spare parts kit	Valve part number
4 Way (5/2) solenoid – air return	1/4"	6	1.4	25-150	5	8110831000000000	2636070*
	3/8"	10	2.6	30-150	5	8110833000000000	2637070*
	1/2"	12	3.5	30-150	5	8110833000000000	2637071*
4 Way (5/2) solenoid – spring return	1/4"	6	1.4	50-150	6	8110832000000000	8110132*
	3/8"	10	2.6	50-150	6	8110825000000000	8110443*
	1/2"	12	3.5	50-150	6	8110825000000000	8110413*
4 Way (5/2) Double solenoid impulse	1/4"	6	1.4	25-150	8	8110827000000000	2636270*
	3/8"	10	2.6	30-150	7	8110826000000000	2637270*
	1/2"	12	3.5	30-150	7A	8110826000000000	2637271*

Order example: To order a 1/4" NPT port, 5/2 solenoid-air valve with a 24Vdc, 1.4 W coil, Model Number: 2636070372002400.

Valve model code 2636070 + Coil code 372002400 = Model Number: 2636070372002400.

To order the valve only, replace the \* after the Valve model code from the table with 9 zero's, i.e. 2636070000000000.

**Hazardous duty applications**

Coil	Coil	Power consumption			Remarks	NEMA classification
		DC	AC			
			Inrush	Holding		
0000000372002400	372002400	1.4W	-	-	1/2" NPT 18" leads	4 X 7.9
0000000372202400	372202400	5 W	-	-		
0000000372312060	372312060	-	6 VA	6 VA		
0000000372602400	372602400	13 W	-	-		
0000000372712060	372712060	-	15 VA	15 VA		

These solenoid comply with insulation class H, and are for use in Class 1, Division 1,2 Groups A, B, C, D; Class 2, Division 1, 2 Groups E, F, G hazardous locations as defined in the National Electric Code.

NOTE: Solenoid valve part numbers change for low watt coil.

**Coils**

Coil	Coil	Power consumption			Remarks	NEMA classification
		DC	AC			
			Inrush	Holding		
0000000024712060	024712060	-	18 VA	10 VA	with DIN Connector	4
0000000024002400	024002400	1.6 W	-	-		
0000000024112060	024112060	-	10 VA	5VA		
0000000026302400	026302400	1.6W	-	-		

**Connector options**

Coil Series	Standard cable clamp	Optional connector part numbers		
		1/2" NPT	Lighted - Cable clamp 24 VAC, DC	120 VAC
02XX	0570275000000000	0661374000000000	0570818000000000	0570816000000000
016X	0661464000000000	8110519000000000	0664811000000000	

Fig. 2 – 1/8" valve solenoid-air return

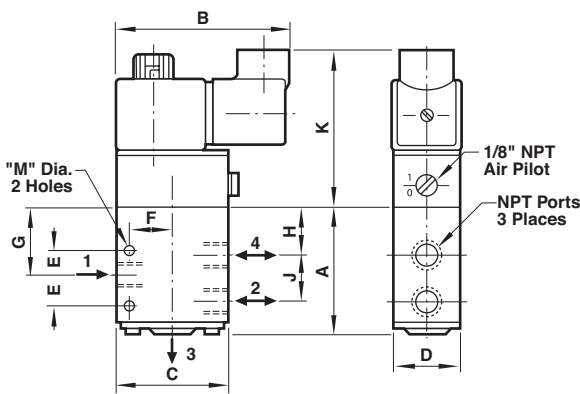


Fig. 3 – 1/8" valve solenoid-spring return

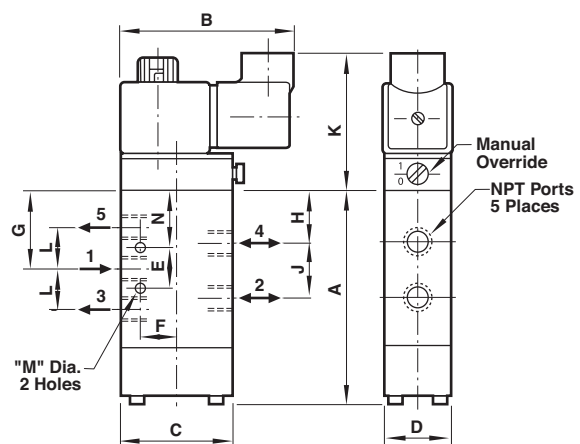


Fig. 4 - 1/8" valve double solenoid

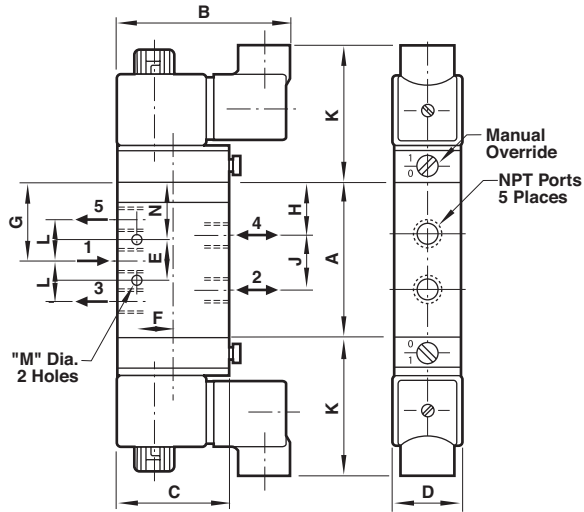
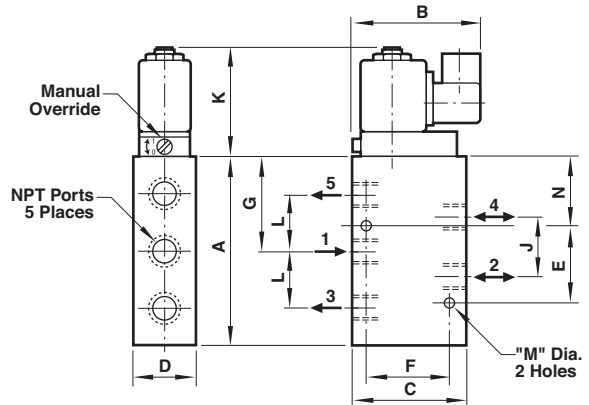


Fig. 5 - 1/2" valve solenoid-air return



External pilot adapter

Kit part number	Used for
8110796	1/8" soft seal valves
8110138	1/4" to 1/2" soft seal valves except 5/3 position valves
8110138X01	1/2" 5/3 position valves only
8110138X02	1/4" 5/3 position valves only

Fig. 6 - 1/4" - 1/2" valve solenoid spring return

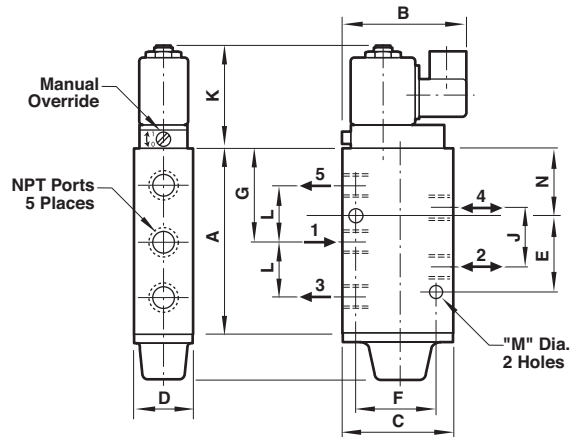


Fig. 7 – 3/8" - 1/2" valve 2 position double solenoid  
Fig. 7A – 1/2" valve 3 position double solenoid

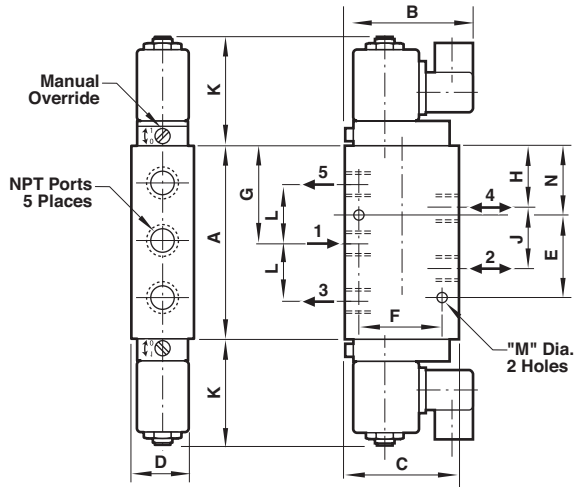
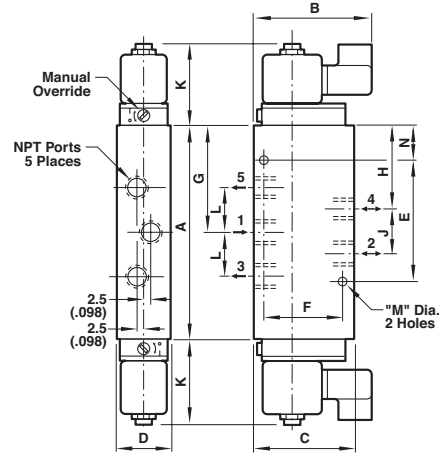


Fig. 8 – 1/4" valve 2 position double solenoid  
Fig. 8A – 1/4" valve 3 position double solenoid



Drawing	Valve size	A	B	C	D	E	F	G	H	J	K	L	M	N
2	1/8"	47 (1.85)	80 (3.15)	40 (1.57)	25 (.98)	11 (.43)	14 (.55)	24 (.95)	15 (.59)	18 (.71)	67 (2.64)	-	5.5 (.22)	-
3	1/8"	84 (3.31)	80 (3.15)	40 (1.57)	25 (.98)	15.8 (.62)	14 (15.5)	30.3 (1.20)	21.3 (.84)	18 (.71)	67 (2.64)	16 (.63)	5.2 (.20)	22.4 (.88)
4	1/8"	60.5 (2.38)	80 (3.15)	40 (1.57)	25 (.98)	15.8 (.62)	14 (1.20)	30.3 (1.20)	21.3 (.84)	18 (.71)	67 (2.64)	16 (.63)	5.2 (.20)	22.4 (.88)
5	1/4"	84 (3.31)	66 (2.60)	55 (2.17)	30 (2.18)	67 (2.64)	40 (1.57)	37 (1.46)	-	24 (.94)	61 (2.40)	24 (.94)	7 (.28)	12 (.47)
5	3/8"	115 (4.53)	73 (2.87)	65 (2.56)	35 (1.38)	46 (1.81)	46 (1.81)	56 (2.20)	-	33 (1.30)	61 (2.40)	33 (1.30)	7 (.28)	39 (1.54)
5	1/2"	115 (4.53)	73 (2.87)	65 (2.56)	35 (1.38)	46 (1.81)	46 (1.81)	56 (2.20)	-	33 (1.30)	61 (2.10)	33 (1.30)	7 (.28)	39 (1.54)
6	1/4"	102 (4.02)	66 (2.60)	55 (2.17)	30 (1.18)	67 (2.64)	40 (1.57)	51 (2.01)	-	24 (.94)	61 (2.40)	24 (.94)	7 (.28)	14 (.55)
6	3/8"	111 (4.37)	73 (2.87)	65 (2.56)	35 (1.38)	46 (1.81)	46 (1.81)	56 (2.20)	-	33 (1.30)	61 (2.40)	33 (1.30)	7 (.28)	39 (1.54)
6	1/2"	111 (4.37)	73 (2.87)	65 (2.56)	35 (1.38)	46 (1.81)	46 (1.81)	56 (2.20)	-	33 (1.30)	61 (2.40)	33 (1.30)	7 (.28)	39 (1.54)
7	3/8"	111 (4.37)	73 (2.87)	65 (2.56)	35 (1.38)	46 (1.81)	46 (1.81)	56 (2.20)	46 (1.81)	33 (1.30)	61 (2.40)	33 (1.30)	7 (.28)	39 (1.54)
7	1/2"	111 (4.37)	73 (2.87)	65 (2.56)	35 (1.38)	46 (1.81)	46 (1.81)	56 (2.20)	46 (1.81)	33 (1.30)	61 (2.40)	33 (1.30)	7 (.28)	39 (1.54)
8	1/4"	102 (4.02)	66 (2.60)	55 (2.17)	30 (1.18)	67 (2.64)	40 (1.57)	51 (2.01)	-	24 (.94)	61 (2.40)	24 (.94)	7 (.28)	14 (.55)
7A	1/2"	174 (6.85)	74 (2.91)	70 (2.76)	40 (1.57)	50 (1.97)	50 (1.97)	87 (3.43)	71 (2.80)	33 (1.30)	61 (2.40)	33 (1.30)	7 (.28)	71 (2.80)
8A	1/4"	122 (4.80)	66 (2.60)	55 (2.17)	30 (1.18)	67 (2.64)	40 (1.57)	61 (2.41)	49 (1.93)	24 (.94)	61 (2.40)	24 (.94)	7 (.28)	25 (.98)

Dimensions in mm (inches)