

**Reduce the noise levels of pneumatic equipment.**  
**Prevent open line exhaust dangers.**  
**Corrosion resistant.**  
**High flow capacity with low back pressure.**  
**Brass mesh screen and aluminum construction provide improved flow, longer life and cleanable element.**  
**Prevent metal chips, abrasive grits, dust and other contaminants from entering open exhaust ports.**

**Technical data**

**Medium:**

Compressed air, filtered,  
 lubricated and non-lubricated  
 Inert gases

**Operation:**

Exhaust silencer

**Mounting:**

Directly in the exhaust port  
 Maximum Pressure: 300 psig  
 (20.7 bar)  
 Maximum temperature: 176°F  
 (80°C)  
 Consult our Technical Service for  
 use below 2°C

**Materials**

Element: Brass wire  
 Base: Aluminum  
 Shell: Aluminum  
 Alternative models  
 M/S & C/S range of porous plastic  
 silencers.  
 T40 series of Quietaire sintered  
 bronze silencers



**Male thread**

Model	Port	Flow factor	oz.	
PTF	BSPT	size	Cv*/C**	
MB001A	MB001B	1/8"	1.3 / 5.3	1.05
MB002A	MB002B	1/4"	2.3 / 9.4	1.05
MBP03A	MBP03B	3/8"	2.9 / 11.8	1.05
MB003A	MB003B	3/8"	4.9 / 20.0	3.53
MB004A	MB004B	1/2"	6.8 / 27.7	3.17
MBP06A	MBP06B	3/4"	7.2 / 29.4	3.17
MB006A	MB006B	3/4"	14.8 / 60.4	15.9
MB008A	MB008B	1"	18.0 / 73.4	14.0
MBP10A	MBP10B	1-1/4"	23.6 / 96.3	14.0

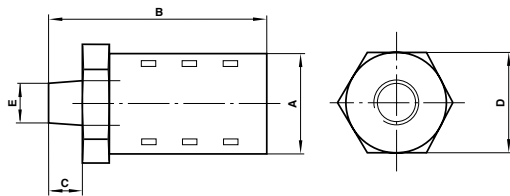
\*Cv measured in US/gall/min \*\*C measured in dm3/(s.bar)

**Female thread**

Model	Port	Flow factor	kg
PTF	size	Cv*/C**	
MA001A	1/8"	0.8 / 3.26	1.05
MA002A	1/4"	2.4 / 9.79	1.05
MA003A	3/8"	5.7 / 23.3	3.53
MA004A	1/2"	6.9 / 28.1	3.17
MA006A	3/4"	18.0 / 73.4	15.9
MA008A	1"	20 / 81.6	14.0
MA010A	1-1/4"	42 / 171.4	21.9
MA012A	1-1/2"	39 / 159.1	21.2
MA016A	2"	59 / 241.0	26.8

\*Cv measured in US/gall/min \*\*C measured in dm3/(s.bar)

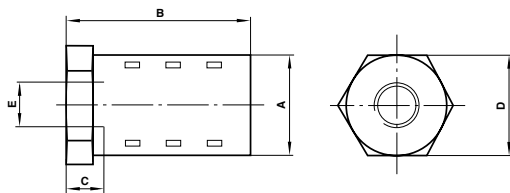
**Male thread dimensions**



Model	A	B	C	D	E*
MB001	0.83	2.01	0.35	0.81	1/8"
MB002	0.83	2.17	0.51	0.81	1/4"
MBP03	0.83	2.17	0.51	0.81	3/8"
MB003	1.26	3.46	0.51	1.25	3/8"
MB004	1.26	3.62	0.67	1.25	1/2"
MBP06	1.26	3.62	0.67	1.25	3/4"
MB006	2.01	5.28	0.79	2.00	3/4"
MB008	2.01	5.43	0.91	2.00	1"
MBP10	2.01	5.51	1.02	2.00	1 1/4"

\* For MB\*\*B Rc (BSPT) according to BS21 and ISO - 7/1  
 For MB\*\*\*A PTF-SAE SHORT according to ANSI-B1.20.1x

**Female thread dimensions**



Model	A	B	C	D	E*
MA001A	0.83	1.65	0.24	0.81	1/8"
MA002A	0.83	1.77	0.35	0.81	1/4"
MA003A	1.26	3.07	0.35	1.25	3/8"
MA004A	1.26	3.27	0.47	1.25	1/2"
MA006A	2.01	4.65	0.47	2.00	3/4"
MA008A	2.01	4.65	0.59	2.00	1"
MA010A	2.52	5.67	0.59	2.50	1-1/4"
MA012A	2.52	5.67	0.59	2.50	1-1/2"
MA016A	2.99	6.61	0.63	3.00	2"

For MA\*\*\*A PTF-SAE SHORT according to ANSI-B1.20.1

### Sintered bronze mufflers

Size	NPT model	Cv
10-32	MS000A	
1/8	MS001A	0.7
1/4	MS002A	1.4
3/8	MS003A	1.9
1/2	MS004A	3.8
3/4	MS006A	6.5
1	MS008A	10.5
1-1/4	MS010A	11.8
1-1/2	MS012A	18.3

Size	BSPT model	Size	BSPP model	Cv
–	–	M5	T40M0500	0.2
1/8"	T40 B1800	1/8	T40C1800	0.54
1/4"	T40 B2800	1/4	T40C2800	1.6
3/8"	T40 B3800	3/8	T40C3800	3.5
1/2"	T40 B4800	1/2	T40C4800	5.1
3/4"	T40 B6800	3/4	T40C6800	9.0
1"	T40 B8800	1	T40C8800	11.6

Reduce the noise levels of pneumatic equipment

Compact and efficient

Screw directly into the exhaust port

Prevent the ingress of dirt



### Porous plastic mufflers

Size	NPT model	BSPP model	Cv
M5	–	M/S0	0.31
1/8	C/S1	M/S1	1.0
1/4	C/S2	M/S2	1.84
3/8	C/S3	M/S3	4.0
1/2	C/S4	M/S4	5.3
3/4	C/S6	M/S6	8.0
1	C/S8	–	12.2

Reduce the noise levels of pneumatic equipment

Compact, efficient and lightweight

Screw directly into the exhaust port

Prevent the ingress of dirt

Low cost



### Stem silencers

Size	NPT Model
5/32"	T45Y0002
1/4"	T45Y0004
3/8"	T45Y0006
6mm	T45P0006
8mm	T45P0008
10mm	T45P0010
12mm	T45P0012

Reduce the noise levels of pneumatic equipment

Compact, efficient and lightweight

Insert directly into Push-in fitting exhaust port

Prevent the ingress of dirt.

Low cost.



### Quietaire coalescing muffler

Port Size NPT	Part Number	Flow Factor Cv
1/2	MC004A	5.2
3/4	MC006A	9.2
1	MC008A	15.7

Easily replaceable cartridge element

Removal of oil mist from exhaust air provides cleaner work environment

Rugged, corrosion resistant construction



**Plastic speed control**

Port size NPT	Part number	Flow factor Cv
1/2	MQ004A	2.5
3/4	MQ006A	2.5
1	MQ008A	7.7
1-1/4	MQ010A	7.7

**Easily replaceable cartridge element**  
**Removal of oil mist from exhaust air provides cleaner work environment.**  
**Rugged, corrosion resistant construction**



**Sintered bronze speed control**

Port size NPT	Part number
1/8	MM001A
1/4	MM002A
3/8	MM003A
1/2	MM004A
3/4	MM006A
1	MM008A

**Cleanable 40-micron sintered bronze diffuser element.**  
**Corrosion resistant construction.**  
**Adjustment screw to control rate of exhaust air flow.**  
**Adjustment screw facilitates a smooth, steady change to flow when turned.**



**High performance flow control Quietaire muffler**

Port size	Part number	
	NPT	Max. flow factor Cv
M5	—	0.07
1/8	T20A1800	0.4
1/4	T20A2800	0.8
3/8	T20A3800	1.7

**Cleanable 40-micron sintered bronze diffuser element.**  
**Corrosion resistant construction.**  
**Adjustment screw to control rate of exhaust air flow.**  
**Adjustment screw facilitates a smooth, steady change to flow when turned.**



**Breather vents**

Port Size NPT	Part Number	Flow Factor Cv
1/8	MV001A	0.1
1/4	MV002A	0.1
3/8	MV003A	0.3
1/2	MV004A	0.5
3/4	MV006A	1.3
1	MV008A	1.6
1-1/4	MV010A	4.2
1-1/2	MV012A	5.2
Port Size ISO G	Part Number	Flow Factor Cv
1/8	M/1511	0.45
1/4	M/1512	1.1
1/2	M/1514	1.5
3/4	M/1516	3.9

**Prevent the ingress of dirt with minimal flow restriction.**  
**Robust and compact.**  
**Screw directly into the exhaust port.**

**Materials**

**NPT:**  
 Base - Nickel plated steel  
 Element - Sintered bronze  
**ISO G:**  
 Base - Aluminum  
 Element - Sintered bronze

