

**Olympian Plus plug in design**
**Constant oil density output  
with varying flow**
**Easy fill with quick release bayonet bowl**
**High visibility prismatic sight glass**
**Technical data**
**L64M/C**
**Maximum pressure:**

250 psig (17 bar)

**Operating temperature\*:**

0° to +175°F (-20° to +80°C)

**L68M/C**
**Maximum pressure:**

250 psig (20 bar)

**Operating temperature\*:**

 0° to +175°F (-20° to +80°C)  
 \* Air supply must be dry enough to  
 avoid ice formation at temperatures  
 below +35°F (+2°C).

**Materials:**
**L64M/C**

Body: zinc

Bowl: aluminum

Yoke: zinc

Elastomers: nitrile and chloroprene

**L68M/C**

Body: aluminum

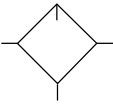
Bowl: aluminum

Yoke: aluminum

Adjusting knob: acetal resin

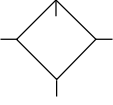
Elastomers: nitrile and chloroprene


**L64M/C Ordering information**

ISO Symbol	Port Size	Model	Flow† scfm (dm <sup>3</sup> /s)	Weight lb (kg)	Service kit
	1/4"	L64M-2AP-EDN	53 (25)	3.13 (1.42)	L64M-KIT
	3/8"	L64M-3AP-EDN	131 (62)	3.09 (1.40)	L64M-KIT
	1/2"	L64M-4AP-EDN	152 (72)	3.02 (1.37)	L64M-KIT
	3/4"	L64M-6AP-EDN	152 (72)	3.81 (1.73)	L64M-KIT

† Typical flow with 90 psig (6.3 bar) inlet pressure and a pressure drop of 7 psig (0.5 bar).

**L68M/C Ordering information**

ISO Symbol	Port Size	Model	Flow† scfm (dm <sup>3</sup> /s)	Weight lb (kg)	Service kit
	3/4"	L68M-6AP-ERN	423 (200)	4.63 (2.10)	L68M-KIT
	1"	L68M-8AP-ERN	423 (200)	4.50 (2.04)	L68M-KIT
	1-1/4"	L68M-AAP-ERN	423 (200)	4.59 (2.08)	L68M-KIT
	1-1/2"	L68M-BAP-ERN	423 (200)	4.67 (2.12)	L68M-KIT

† Typical flow with 90 psig (6.3 bar) inlet pressure and a pressure drop of 7 psig (0.5 bar).

**Options selector (L64)**

**L64★-★★P-★★N**

Type	Substitute
Oil-fog	C
Micro-fog	M
Port size	Substitute
1/4"	2
3/8"	3
1/2"	4
3/4"	6
No yoke	N
Threads	Substitute
PTF	A
ISO G parallel	G
No yoke	N

Bowl	Substitute
1 qt long metal bowl with liquid level indicator	A
7 oz. metal with liquid level indicator	D
Drain	Substitute
Manual (1/4 turn)	Q
Closed bottom	E

**Options selector (L68)**

**L68★-★★P-★★N**

Type	Substitute
Oil-fog	C
Micro-fog	M
Port size	Substitute
3/4"	6
1"	8
1-1/4"	A
1-1/2"	B
None	N
Threads	Substitute
PTF	A
ISO G parallel	G
No yoke	N

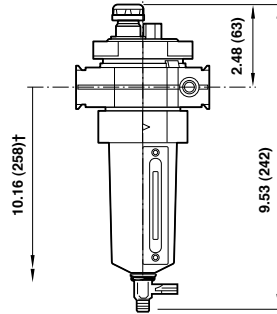
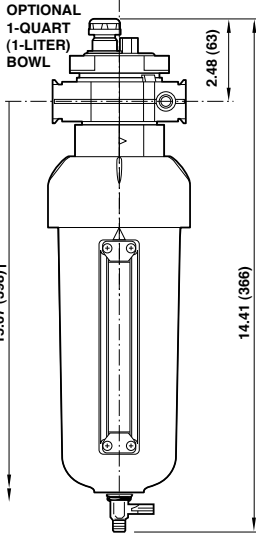
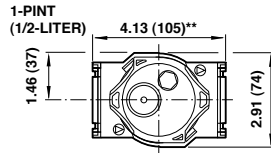
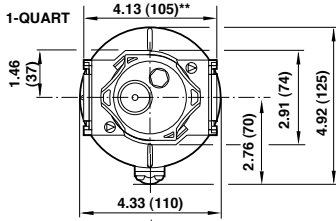
Bowl	Substitute
1 litre (1 quart)	U
1/2 litre (1 pint)	R
Drain	Substitute
Manual (1/4 turn)	Q
Closed bottom	E

**Accessories**

	Bracket kit	Bracket kit	Bracket kit to fit 1 liter bowl version	3/2 Shut-off valve	Single yoke	Double yoke	Tamper resistant wire	Quick fill adapter	
L64	1/4"	–	74504-50	74504-52	T64E-2AB-P1N	Y64A-2AA-N1N	Y64A-2AA-N2N	2117-01	18-011-024
	3/8"	–	74504-50	74504-52	T64E-3AB-P1N	Y64A-3AA-N1N	Y64A-3AA-N2N	2117-01	18-011-024
	1/2"	–	74504-50	74504-52	T64E-4AB-P1N	Y64A-4AA-N1N	Y64A-4AA-N2N	2117-01	18-011-024
	3/4"	–	74504-50	74504-52	T64E-6AB-P1N	Y64A-6AA-N1N	Y64A-6AA-N2N	2117-01	18-011-024
L68	3/4"	18-001-979	74504-50	74504-52	T68E-6AB-B2N	Y68A-6AN-N1N	Y68A-6AN-N2N	2117-01	18-011-021
	1"	18-001-979	74504-50	74504-52	T68E-8AB-B2N	Y68A-8AN-N1N	Y68A-8AN-N2N	2117-01	18-011-021
	1-1/4"	18-001-978	74504-50	74504-52	T68E-AAB-B2N	Y68A-AAN-N1N	Y68A-AAN-N2N	2117-01	18-011-021
	1-1/2"	–	74504-50	74504-52	T68E-BAB-B2N	Y68A-BAN-N1N	Y68A-BAN-N2N	2117-01	18-011-021

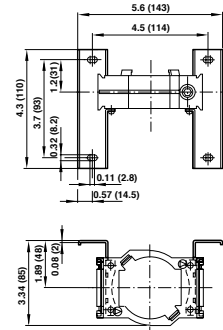
Optional 1 quart US (1 liter) bowl

L64



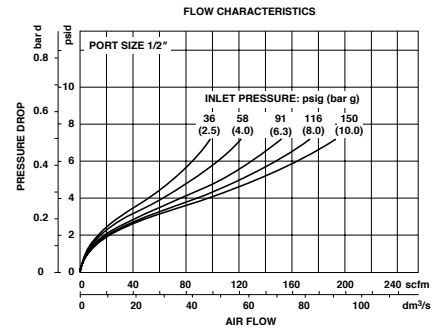
\*\*6.18" (157) for models with 3/4" ports.  
† Minimum clearance required to remove unit.

Mounting bracket (L64)

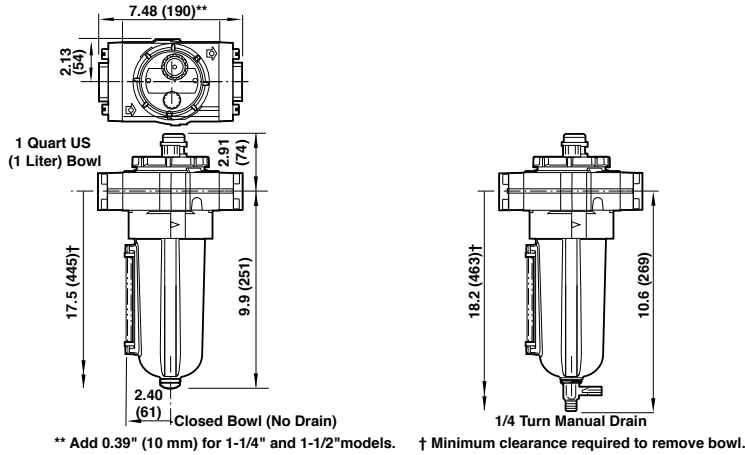


Typical Performance Characteristics

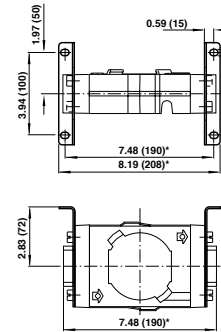
L64



L68



Mounting bracket (L68)



Dimensions in inches (mm)

Typical Performance Characteristics

L68

