

Compact instrument units with high performance
Stable regulation with temperature compensation
Excellent flow and regulation characteristics
Panel Mounting facility

**B38****R38**

Technical data

Fluid:

Compressed air, neutral gases

NOTE: Contact technical support for use with other media.

Maximum pressure

290 psig (20 bar)

Operating temperature:

-40° to 175°F (-40° to 80°C) *

* Air supply must be dry enough to avoid ice formation at temperatures below 35°F (2°C).

Typical relief differential at 30

psig (2 bar) outlet pressure:

2.3 psig (0.16 bar)

Maximum bleed flow at 30 psig

(2 bar) outlet pressure (relieving

types only):

0.003 scfm (1.5 cm³/s)†

† Maximum bleed rate occurs

under dead-end (no flow)

conditions.

Gauge ports:

1/4 NPT

Materials

Body: aluminum

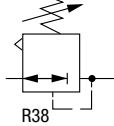
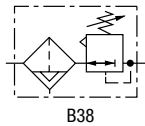
Bonnet: aluminum

Adjusting screw: steel

Elastomeric materials: nitrile

Ordering information

Models listed are relieving type with 3.6 to 100 psig (0.25 to 7 bar) outlet pressure adjustment range *, and PTF threads. A gauge is not included.

ISO Symbols	Port Size	Model Number	Flow† scfm (dm ³ /s)	Weight lbs (kg)
 R38	1/4" PTF	R38-200-RNKA	17 (8)	1.06 (0.48)
 B38	1/4" PTF	B38-200-B1KA	17 (8)	1.18 (0.54)

* Outlet pressure can be adjusted to pressures in excess of, and less than, those specified. Do not use these units to control pressures outside of the specified ranges.

† Typical flow with 100 psig (7 bar) inlet pressure, 15 psig (1 bar) set pressure and 1 psig (0.05 bar) droop from set.

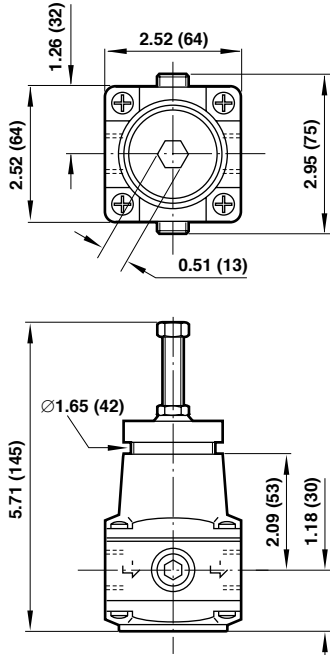
Service Kits

R38/B38 Item	Type	Part number
30 psig (2 bar) Range	Relieving	R38-100R
60, 100 psig (4 bar, 7 bar) Range	Relieving	R38-101R

Service kit includes diaphragm assembly, o-ring, valve, valve spring and 8 pan head screws.

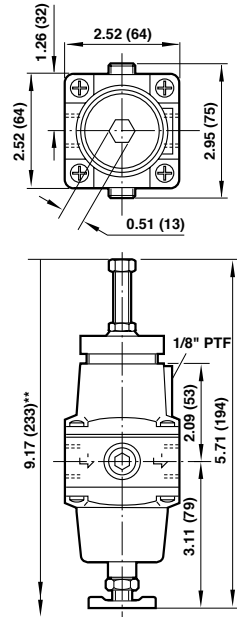
B38 Filter Elements	
B38-100A-5	5 µm

R38



Panel mounting hole diameter: 1.65" (42 mm)
Panel thickness: 0" to 0.24" (0 to 6 mm)

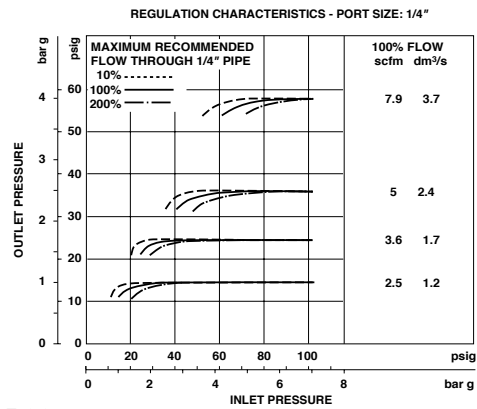
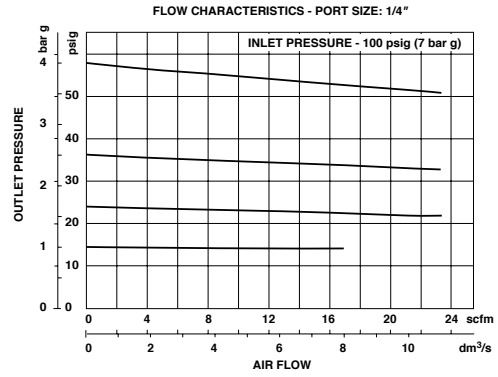
B38



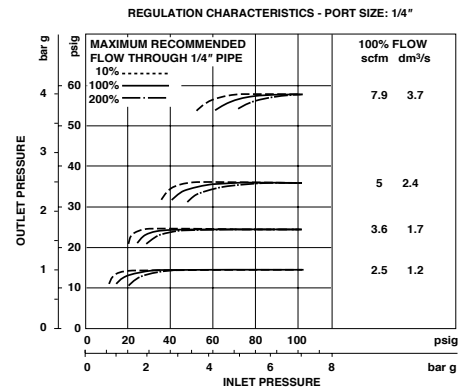
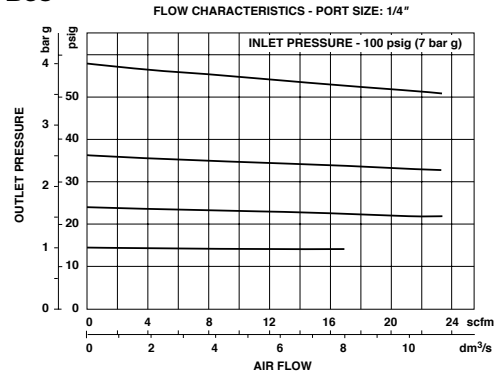
** Minimum clearance required to remove bowl.
Panel mounting hole diameter: 1.65" (42 mm)
Maximum panel thickness: 0.24" (6 mm)

Typical Performance Characteristics

R38



B38



Dimensions in inches (mm)