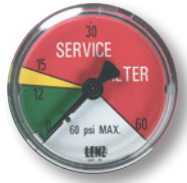




## 2" Diameter Filter Indicating Gauges



**MC-12**  
Return Line Indicating Gauge  
for **15 PSI** Filter Applications  
2" Multi color  
0-12 PSI Green  
12-15 PSI Yellow  
15-60 PSI Red (Service Filter)  
*(To be used with "T" Indicator Port Location)*



**MC-20**  
Return Line Indicating Gauge  
for **25 PSI** Filter Applications  
2" Multi color  
0-20 PSI Green  
21-24 PSI Yellow  
25-60 PSI Red (Service Filter)  
*(To be used with "T" Indicator Port Location)*



**CP-2**  
**Compound Indicating Gauge**  
(Suction or Return Line)  
10" to 30" Vacuum is a Red Danger Area.  
0-60 PSI  
A Red "Change Filter" Sticker for the Pressure side is included with each gauge for application after the pressure factor is determined.  
*(To be used with "T" or "S" Indicator Port Location)*



**GLY-MC-20**  
Glycerin Filled  
Return Line Indicating Gauge  
for **25 PSI** Filter Applications  
2" Multi color  
0-20 PSI Green  
21-24 PSI Yellow  
25-60 PSI Red (Service Filter)  
*(To be used with "T" Indicator Port Location)*



**135080**  
Suction Line Indicating Gauge for  
**5 PSI** vacuum filter application  
2" Multi color  
0-9" HG Green  
9-11" HG Yellow  
11-30" HG Red (Service Filter)  
*(To be used with "S" Indicator Port Location)*

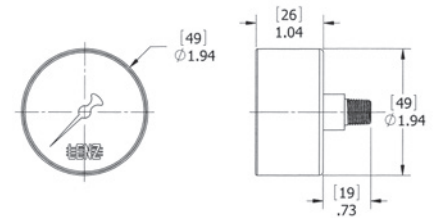


**VAC-3-20**  
Suction Line Indicating Gauge  
for **3 PSI** vacuum filter applications  
2" Multi color  
0-3" HG Green  
4-6" HG Yellow  
6-30" HG Red (Service Filter)  
*(To be used with "S" Indicator Port Location)*

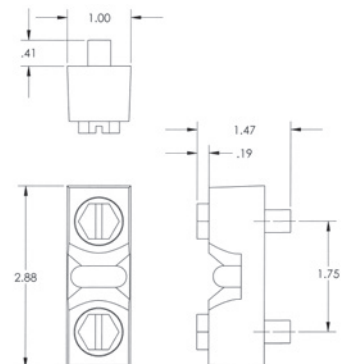


**Differential Indicator DP-75**  
Simple differential sliding indicator which changes from green to red at 7 PSID.  
0 - 7 PSID. Green Clean  
7 - 10 PSID. Red Service Filter  
CP Series (500, 750, 1010, 1280, 1580)

*\*Indicators ordered and shipped separately*



**DIAL INDICATOR**



**DP-75**