

Olympian Plus Oil Vapor Removal Filter

F64B/L, F68V/Y

Olympian Plus plug in system

Adsorbing type activated carbon element removes oil vapors and most hydrocarbon odors

Long service life of filter element.
Minimum life of 400 hours when the required oil removal filter is installed upstream and the filtration temperature is between 70° to 80°F (20° to 26°C).

Oil and dirt contamination in outlet air within ISO 8573-1: Quality Class 1.7.1. F68 V/Y inlet air must be prefiltered with an F68G and F68 C/H

Technical data

Fluid:

Compressed air, neutral gases

NOTE: Contact Norgren for use with other media.

Maximum pressure:

250 psig (17 bar)

Guarded transparent bowl:

150 psig (10 bar)

Operating temperature*:

0° to +150°F (-20° to +65°C)

Guarded transparent bowl:

-30° to 125°F (-34° to 50°C)

* Air supply must be dry enough to avoid ice formation at temperatures below +35°F (+2°C).

Maximum remaining oil content:

0.01 mg/m³ at +70°F (+20°C) with an inlet concentration of 17 mg/m³.

Materials

Body: F64- Zinc, F68-Aluminum

Yoke: F64- Zinc, F68-Aluminum

Bowl: F64- Zinc, F68-Aluminum

Elastomers: Nitrile

Service Kits:

F64 B/L 4380-21

F68V/Y 4380-302



F64B/L



F68V/Y

Ordering Information

Models listed are with PTF threads, and metal bowl.

Port Size	Model	Maximum flow* scfm (dm ³ /s)	Weight lb (kg)
1/4"	F64B-2AN-ARO	15.0 (7.0)	4.07 (1.83)
1/2"	F64L-4AN-ARO	23.3 (11.0)	5.56 (2.50)
3/4"	F64L-6AN-ARO	23.3 (11.0)	6.40 (2.88)
Standard flow (short element)	F68V-4AN-EMA	53 (25)	5.13 (2.33)
High flow (long element)	F68Y-8AN-ECA	127 (60)	5.70 (2.59)

*Maximum flow at 90 psig (6.3 bar) inlet pressure to maintain stated oil removal performance.

Options selector (F64B/L)

F 6 4 * - * * N - * * 0

Body size	Substitute	←	Bowl	Substitute
Standard flow	B		Metal with liquid level indicator	R
High flow	L		Transparent	T
Port size	Substitute	←	Drain	Substitute
1/4"	2		Manual	M
3/8"	3		Auto drain	A
1/2"	4			
3/4"	6			
Threads	Substitute	←		
PTF	A			
ISO G parallel	G			
None	N			

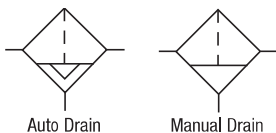
Options selector (F68V/Y)

F 6 8 * - * * N - E * A

Body size	Substitute	←	Bowl	Substitute
Standard flow	V		1 pint (0.5 liter)	M*
High flow	Y		1 quart (1 liter)	C**
Port size	Substitute	←		
1/2"	4*			
3/4"	6			
1"	8			
None	N			
Threads	Substitute	←		
PTF	A			
ISO G parallel	G			
None	N			

Only available with F68V
** Only available with F68Y

ISO Symbols



Olympian Plus Oil Vapor Removal Filter

F64C/H, F68V/Y

Accessories

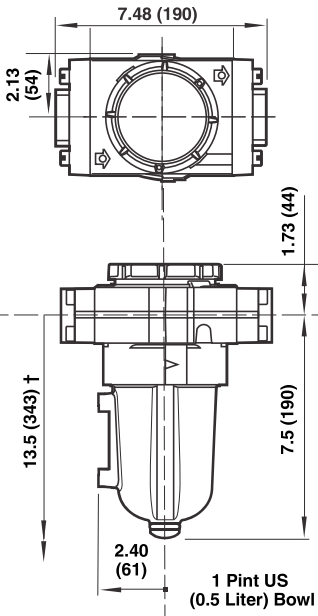
Bracket kit Bracket kit 3/2 Shut-off valve Single Yoke Double Yoke Replacement Elements



F64B/F64L	1/4	74504-50	T64E-2AB-P1N	Y64A-2AA-N1N	Y64A-2AA-N2N	F64G (pre-filter) 5 µm	4338-01
	3/8	74504-50	T64E-3AB-P1N	Y64A-3AA-N1N	Y64A-3AA-N2N	F64B Coalescing	5350-99
	1/2	74504-50	T64E-4AB-P1N	Y64A-4AA-N1N	Y64A-4AA-N2N	F64L Coalescing	5350-98
	3/4	74504-50	T64E-6AB-P1N	Y64A-6AA-N1N	Y64A-6AA-N2N	Integral pre-filter (F64B/L)	3698-02
						Activated carbon (F64B/L)	5568-01
F68V/Y	1/2	18-001-979	T68E-4AB-B2N	Y68A-4AN-N1N	Y68A-4AN-N2N	Standard Flow (F68V)	665-72
	3/4	18-001-979	T68E-6AB-B2N	Y68A-6AN-N1N	Y68A-6AN-N2N	High Flow (F68Y)	665-70
	1	18-001-979	T68E-8AB-B2N	Y68A-8AN-N1N	Y68A-8AN-N2N		

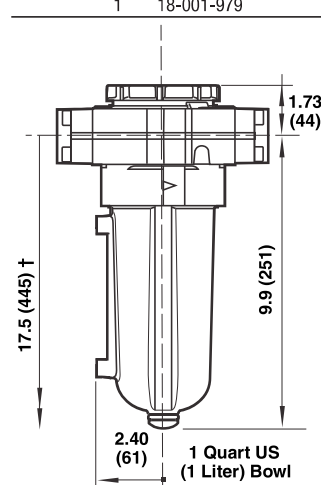
Dimensions in inches (mm)

F68V/Y



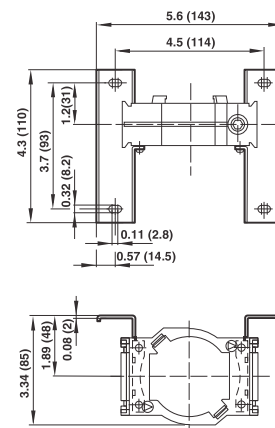
1 Pint US
(0.5 Liter) Bowl

† Minimum clearance required to remove bowl.

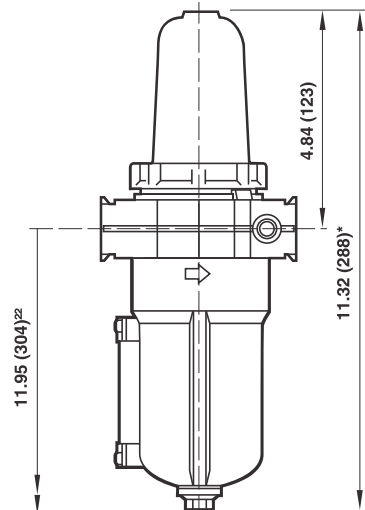
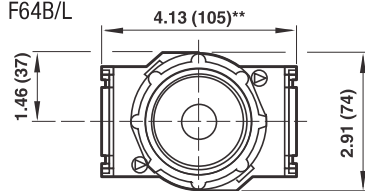


1 Quart US
(1 Liter) Bowl

Mounting bracket (F64B/L)



F64B/L

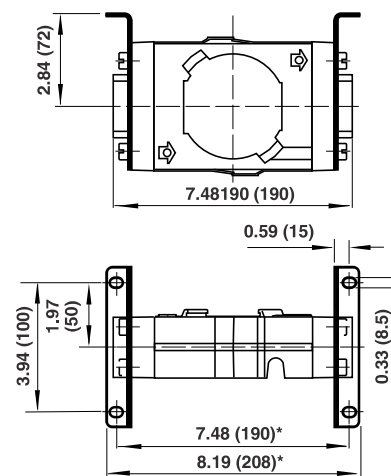


*Automatic drain shown. Subtract 0.3" (mm) for manual drain.

** Minimum clearance required to remove bowl.

** 6.18 (157 mm) for models with 3/4" ports.

Mounting bracket (F68V/Y)



* Add 0.39" (10) for 1-1/4" ported yokes.