

HIGH FLOW MUFFLER

HFMA-SERIES

ALUMINUM BODY

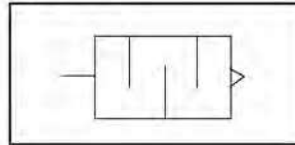


HFMA-Series high flow muffler features a 50 mesh, self-cleaning stainless steel screen, and combined with corrosion-resistant aluminum shell to create a highly efficient, ultra-quiet muffler designed with minimal back pressure.

When installed on the exhaust parts of pneumatic valves to manifolds, the aluminum body mufflers provides a quick and inexpensive way to reduce work area noise while preventing contamination from entering into the inside of the pneumatic valves.

Unit should be mounted in a protective position free from excessive vibration. Use wrench on flats to tighten unit to the device.

Symbol



HOW TO ORDER

HFMA —



High Flow Muffler
Aluminum Body

Connection (NPT)
18=1/8", 28=1/4"
38=3/8", 48=1/2"
68=3/4", 88=1"

None = NPT
P = BSPT (Metric)

SPECIFICATIONS

ITEM	MODEL	HFMA-18	HFMA-28	HFMA-38	HFMA-48	HFMA-68	HFMA-88
CONNECTION	NPT	1/8"	1/4"	3/8"	1/2"	3/4"	1"
OVERALL LENGTH	IN.	1 13/16"	1 13/16"	3 19/64"	3 19/64"	4 9/16"	4 5/8"
DIAMETER	IN.	13/16"	13/16"	1 1/4"	1 1/4"	2"	2"
FLATS	IN.	5/8"	5/8"	1"	1"	1 5/8"	1 5/8"
MATERIAL	BODY ELEMENT	ALUMINUM 50 MESH STAINLESS STEEL SCREEN					
MAX OPERATING PRESSURE		300 PSI (21.1 kg/cm ²)					
OPERATING TEMPERATURE		35~ 160°F (1.6~ 70°C)					
WEIGHT (APPROX.)	OZ.	0.52	0.52	1.81	1.83	5.2	5.52
UNIT PACK	EA.	5	5	5	5	1	1

FLOW CHARACTERISTICS

