

Pressure Gauge (analogue) - Type SPG

A



Pressure Gauge (Analogue) Type SPG (Stem Mounting)



Pressure Gauge (Analogue) Type SPG (Panel Mounting)

Product Description

Area of Application

- Mechanical pressure measurement

Features

- Suitable for hydraulic oil and gaseous media compatible with copper based alloys
- Available in nominal sizes 63 and 100 mm / 2.5 and 4 in
- Thread form: for BSP (G1/4 and G1/2), NPT (1/4 NPT and 1/2 NPT), SAE (7/16–20 UNF)
- Stainless Steel (1.4301) housing
- Acrylic sight glass
- Glycerine filled
- Standard dual scales with pressure indication in bar and PSI
- U-bolt or flange mounting kit on request

Note: Please contact STAUFF before you use SPG with other media.

Options

- Protective rubber cap
- Additional scale readings including personalisation
- U-bolt and flange mounting kits are available separately as spare parts

Technical Data

- Pressure gauge according to EN 837-1
- Subject to technical modifications

Accuracies

SPG-063: 1.6 (± 1.6 % FS\* as per EN 837-1)  
 SPG-100: 1.0 (± 1.0 % FS\* as per EN 837-1)

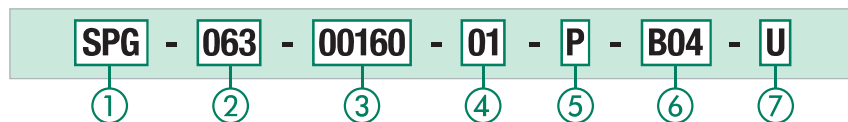
Permissible Temperatures

- Ambient: -20 °C ... +60 °C / -4 °F ... +140 °F
- Media: max. +60 °C / max. +140 °F

Protection Ratings

- IP 65: for all manometer SPG-100 and SPG-063 > 16 bar / 232 PSI  
 IP 65 protection rating: Dust tight and protected against water jets
- IP 54: for all manometer SPG-063 ≤ 16 bar / 232 PSI due to pressure compensation opening  
 IP 54 protection rating: Dust protected and protected against splashing water

Order Codes



① Series and Type

Stainless Steel Pressure Gauge **SPG**

② Size

Ø 63 mm, with G1/4 or 1/4 NPT connection **063**  
 Ø 100 mm, with G1/2 or 1/2 NPT connection **100**

③ Pressure Ranges

Pressure Ranges for style of scale 01 - bar/PSI	Code	Pressure Ranges for style of scale 05 - PSI/bar	Code
-1 ... 1,5 bar / -14.5 ... 21 PSI	<b>(-00001)-00001.5</b>	-1,02 ... 0 bar / -30 inHg ... 0 PSI	<b>30HG30</b>
-1 ... 3 bar / -14.5 ... 43 PSI	<b>(-00001)-00003</b>	-1,02 ... 2,07 bar / -30 inHg ... 30 PSI	<b>03030</b>
0 ... 10 bar / 0 ... 145 PSI	<b>00010</b>	0 ... 2,07 bar / 0 ... 30 PSI	<b>00030</b>
0 ... 16 bar / 0 ... 232 PSI	<b>00016</b>	0 ... 4,14 bar / 0 ... 60 PSI	<b>00060</b>
0 ... 25 bar / 0 ... 362 PSI	<b>00025</b>	0 ... 6,89 bar / 0 ... 100 PSI	<b>00100</b>
0 ... 40 bar / 0 ... 580 PSI	<b>00040</b>	0 ... 11,03 bar / 0 ... 160 PSI	<b>00160</b>
0 ... 60 bar / 0 ... 870 PSI	<b>00060</b>	0 ... 13,79 bar / 0 ... 200 PSI	<b>00200</b>
0 ... 100 bar / 0 ... 1450 PSI	<b>00100</b>	0 ... 20,68 bar / 0 ... 300 PSI	<b>00300</b>
0 ... 160 bar / 0 ... 2320 PSI	<b>00160</b>	0 ... 34,74 bar / 0 ... 500 PSI	<b>00500</b>
0 ... 250 bar / 0 ... 3625 PSI	<b>00250</b>	0 ... 41,37 bar / 0 ... 600 PSI	<b>00600</b>
0 ... 400 bar / 0 ... 5801 PSI	<b>00400</b>	0 ... 68,95 bar / 0 ... 1000 PSI	<b>01000</b>
0 ... 600 bar / 0 ... 8702 PSI	<b>00600</b>	0 ... 103,42 bar / 0 ... 1500 PSI	<b>01500</b>
0 ... 680 bar / 0 ... 9862 PSI	<b>00680</b>	0 ... 137,90 bar / 0 ... 2000 PSI	<b>02000</b>
0 ... 700 bar / 0 ... 10152 PSI	<b>00700</b>	0 ... 206,84 bar / 0 ... 3000 PSI	<b>03000</b>
0 ... 1000 bar / 0 ... 14503 PSI	<b>01000</b>	0 ... 275,79 bar / 0 ... 4000 PSI	<b>04000</b>
		0 ... 344,74 bar / 0 ... 5000 PSI	<b>05000</b>
		0 ... 413,69 bar / 0 ... 6000 PSI	<b>06000</b>
		0 ... 517,11 bar / 0 ... 7500 PSI	<b>07500</b>
		0 ... 689,48 bar / 0 ... 10000 PSI	<b>10000</b>

Note: Others on request. Information always refer to the pressure setting of the outside scale.

④ Styles of Scales

bar / PSI (bar outside/PSI inside - standard option Europe) **01**  
 bar **02**  
 PSI **03**  
 PSI / bar (PSI outside/bar inside - standard option North America) **05**  
 kPa / PSI (kPa outside/ PSI inside) **10**

Note: Others on request.

⑤ Adaption

Stem mounting **S**  
 Panel mounting **P**

⑥ Process Connection

G1/4 (only SPG-063) **B04**  
 G1/2 (only SPG-100) **B08**  
 1/4 NPT (only SPG-063) **N04**  
 1/2 NPT (only SPG-100) **N08**  
 7/16–20 UNF (only SPG-063) **U04**

Note: Others on request.

⑦ Accessories

No accessory **(none)**  
 U-bolt assembly **U**  
 Front flange assembly (for panel mount only) **F**  
 Rear flange assembly **R**  
 U-bolt and front flange assembly (for panel mount only) **UF**  
 Protective rubber cap (for stem mount only) **G**

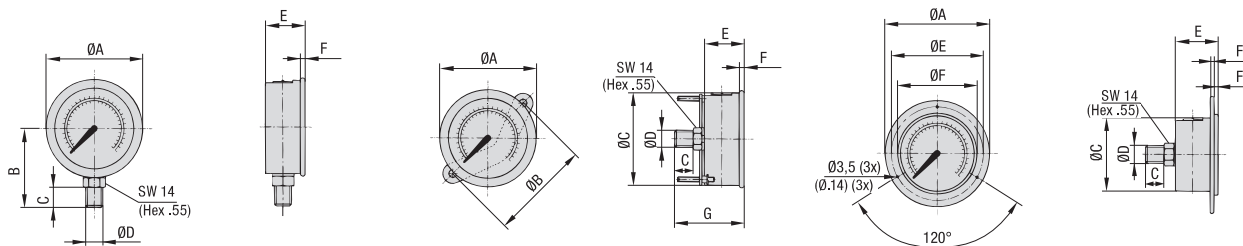
For further information see Catalogue 7 - STAUFF Test.

\* FS = Full Scale



## Pressure Gauge (analogue) - Type SPG

A



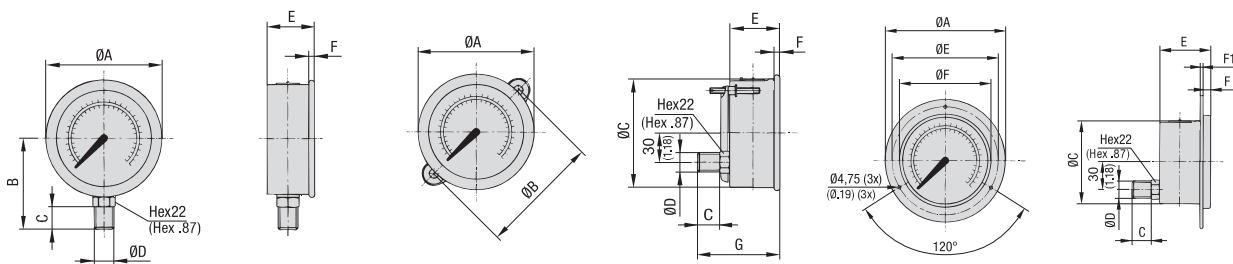
SPG-063 ... S ...

SPG-063 ... P ... U

SPG-063 ... P ... F

## Dimensions SPG-063

Version Pressure Gauge	Dimension (mm/in)											
	ØA	ØB	ØC	ØD	ØE	ØF	B	C	E	F	F1	G
SPG-063	69	-	-	G1/4	-	-	54	15	32	6,5	-	-
	2.72	-	-	1/4 NPT	-	-	2.13	.59	1.26	.26	-	-
				7/16-20 UNF								
SPG-063 ... U	69	72	62	G1/4	-	-	-	15	32	6,5	-	56
	2.72	2.83	2.44	1/4 NPT	-	-	-	.59	1.26	.26	-	2.20
				7/16-20 UNF								
SPG-063 ... F	85	-	62	G1/4	75	68	-	15	32	1	6,5	-
	3.35	-	2.44	1/4 NPT	2.95	2.68	-	.59	1.26	.04	.26	-
				7/16-20 UNF								



SPG-100 ... S ...

SPG-100 ... P ... U

SPG-100 ... P ... F

## Dimensions SPG-100

Version Pressure Gauge	Dimension (mm/in)											
	ØA	ØB	ØC	ØD	ØE	ØF	B	C	E	F	F1	G
SPG-100	107	-	-	G1/2	-	-	87	23	48	8	-	-
	4.21	-	-	1/2 NPT	-	-	3.43	.91	1.89	.31	-	-
SPG-100 ... U	107	107	100	G1/2	-	-	-	23	48	8	-	81,5
	4.21	4.21	3.94	1/2 NPT	-	-	-	.91	1.89	.31	-	3.21
SPG-100 ... F	132	-	100	G1/2	116	107	-	23	48	8	1,25	-
	5.20	-	3.94	1/2 NPT	4.57	4.21	-	.91	1.89	.31	.05	-

\* FS = Full Scale

Dimensional drawings: All dimensions in mm (in).

