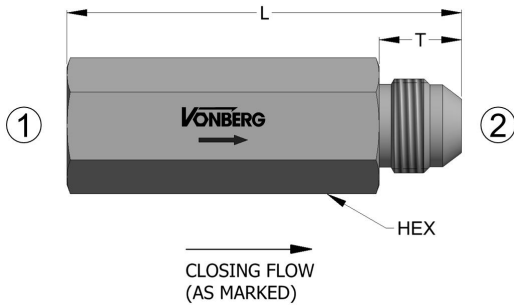
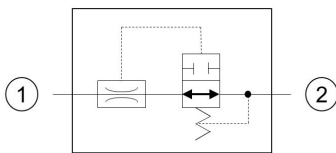


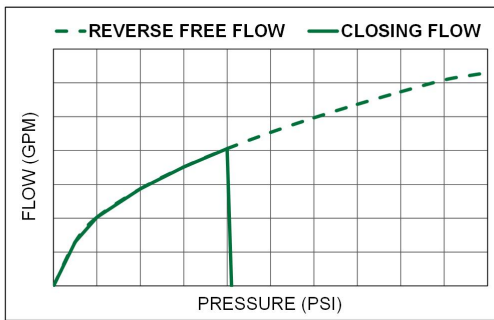
PRODUCT



SCHEMATIC



TYPICAL PERFORMANCE



DESCRIPTION

AN IN-LINE VELOCITY FUSE WITH A FEMALE SAE O-RING INLET AND A MALE JIC OUTLET THAT PROVIDES FULL-LINE SHUT-OFF IN THE EVENT OF A LINE FAILURE.

OPERATION

- A FLOW BELOW THE SPECIFIED LIMIT IS ALLOWED FROM (1) TO (2).
- FLOW ABOVE THE SPECIFIED LIMIT IS ASSUMED TO BE A LINE FAILURE AND IS BLOCKED.
- FLOW FROM (2) TO (1) PASSES THROUGH THE CONTROLLING ORIFICE BUT IS UNCONTROLLED.

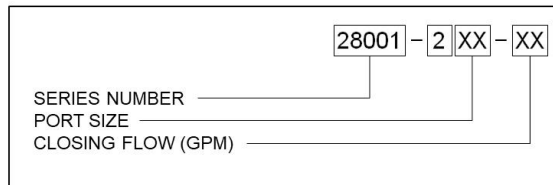
FEATURES

- RAPID RESPONSE.
- FAIL SAFE DESIGN.
- STEEL COMPONENTS.

SPECIFICATIONS

CLOSING FLOW TOLERANCE	+15% / -0%
OPERATING PRESSURE	3500 PSI
REOPENING DIFFERENTIAL	50 PSI
TEMPERATURE RANGE	250° F TO -40° F

ORDERING INFORMATION



MODEL	INLET 1	OUTLET 2	FLOW RANGE	L	HEX
28001-204	-04 SAE - 7/16-20	-04 JIC - 7/16-20	0.1 TO 5.0 GPM	2.65	0.625
28001-206	-06 SAE - 9/16-18	-06 JIC - 9/16-18	0.5 TO 10.0 GPM	2.90	0.750
28001-208	-08 SAE - 3/4-16	-08 JIC - 3/4-16	1.0 TO 25.0 GPM	3.15	0.938
28001-210	-10 SAE - 7/8-14	-10 JIC - 7/8-14	2.0 TO 40.0 GPM	3.40	1.125
28001-212	-12 SAE - 1 1/16-12	-12 JIC - 1 1/16-12	2.0 TO 50.0 GPM	3.95	1.375